

Huawei B593 B593U-12 4G LTE CPE Quick Setup

Keywords: HUAWEI B593 Setup, how to setup HUAWEI B593, HUAWEI B593 LTE CPE Configuration, HUAWEI B593U-12

As the world's first **4G LTE CPE**, Huawei B593 is now commonly used in many areas, but it seems Huawei B593 is used more at home or SOHO office. Even though it becomes more and more well-known, many users don't know how to set up this 4G CPE.



The **4G LTE CPE** is different from the 3G wireless router what we had used. There is no Port for Ethernet to input data. The CPE connects network via one SIM card Slot. And 4 Ethernet ports are outputting data for desktop. And two VoIP telephone ports and one battery charger port are lines with the Ethernet ports.



Today, we have a brief introduction about how to quick setup the LTE CPE [Huawei B593u-12](#).

First step is to plug the SIM card to Huawei B593; when you first get the device, you may don't

know where to plug the SIM card, below the image will show the slot for SIM card.

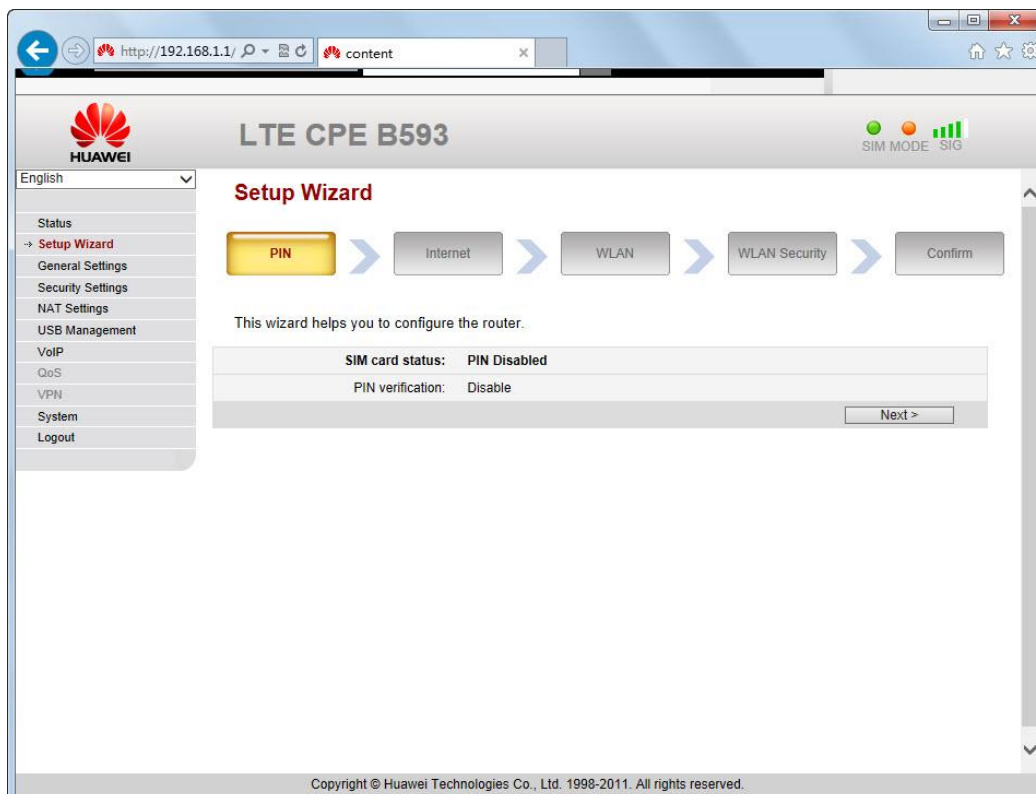


Then plug the power adapter and press the power button to start the device. After power on, the indicators on the front of Huawei B593 will start shining. After few second, you could find the SSID in your PC, and then connect it through the WLAN Key on the back stick of the CPE.

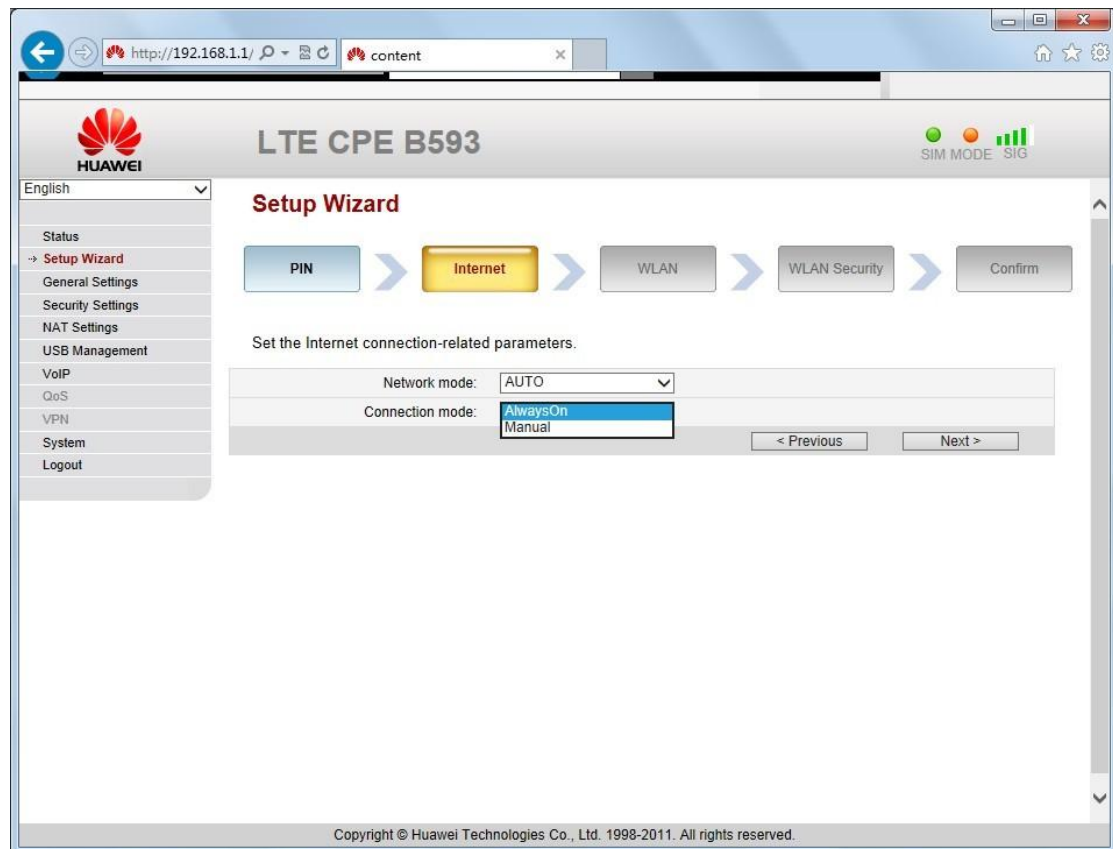
After connected with the WiFi, land the home page <http://192.168.1.1> and default password is admin



Then click the Setup and the management page will guide to Setup Wizard




If the SIM card PIN is disabled, click next to Internet setting, users could choose the network mode and connection mode per users' preference.



Then click next to set up WLAN, users could setup the WiFi mode, Country mode, Channel, SSID name and to hide the broadcast.

←→http://192.168.1.1/content

LTE CPE B593

SIM MODE SIG

English

Status

→ Setup Wizard

General Settings

Security Settings

NAT Settings

USB Management

VoIP

QoS

VPN

System

Logout

Setup Wizard

PIN

Internet

WLAN

WLAN Security

Confirm

Please set wireless network-related parameters.

Enable WLAN: It is used to specify whether to enable the WLAN.

Mode: It is used to select a working mode of the WLAN. You can select 802.11b, 802.11g, 802.11n, or 802.11b/g, 802.11b/g/n (that is the mixed mode).

Country code: It is used to select the country where the WLAN works. Then the channel list of the WLAN is generated based on the country that you set.

Channel: It is used to select an appropriate channel from the channel list based on the settings of the WLAN. To avoid signal interference, channels allocated to each AP should be different. You are recommended to select Auto.

SSID: You can enter any characters. The character string contains at most 32 characters and is case-sensitive.

Enable WLAN:☒ Enable

Mode:

802.11b/g/n

Country code:

Germany

Channel:

Auto

SSID:

WLAN1-30E146

 * (1-32 ASCII characters)

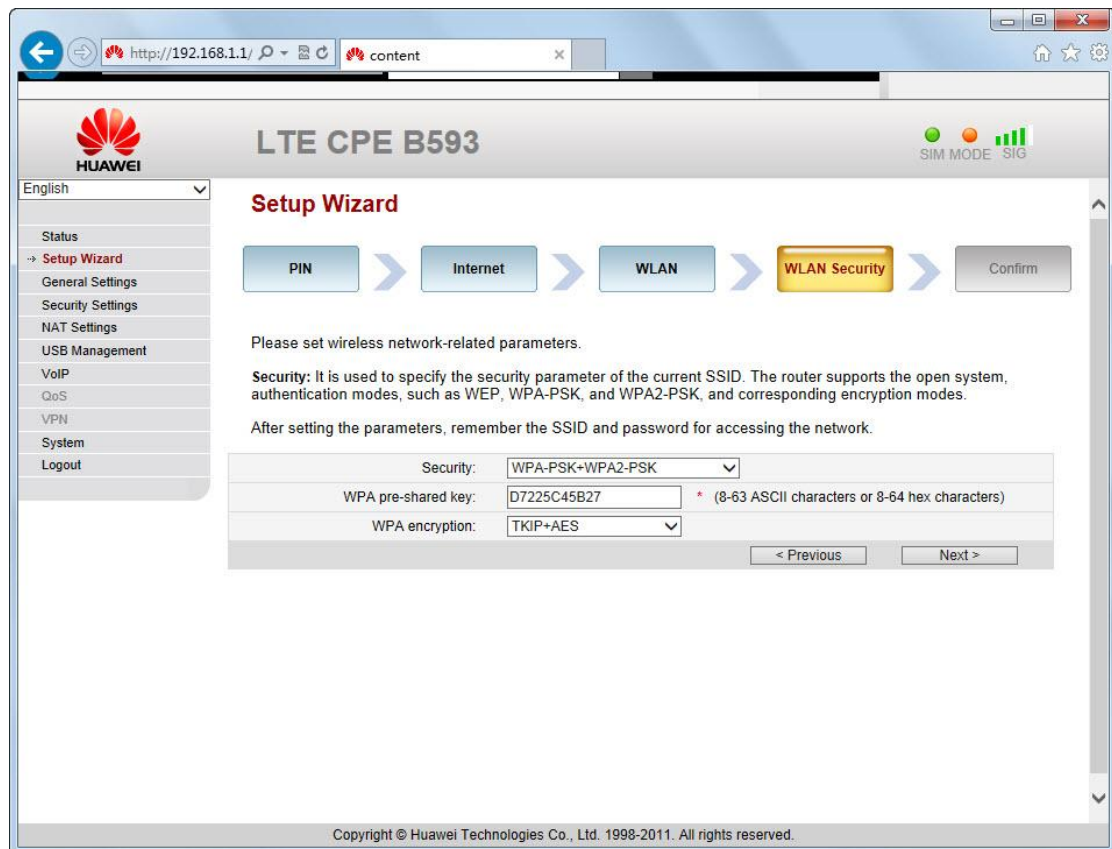
Hide broadcast:☐ Enable

< Previous

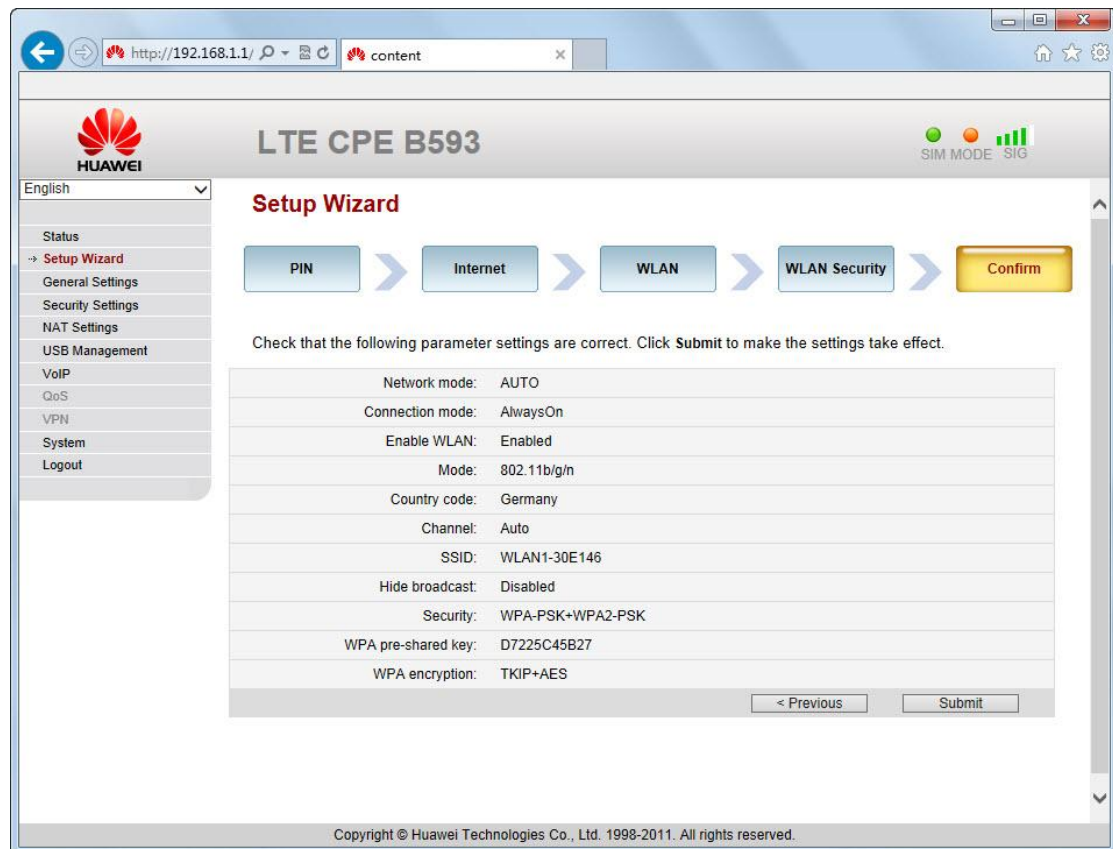
Next >

Copyright © Huawei Technologies Co., Ltd. 1998-2011. All rights reserved.

Then next step of set up the WLAN Security, users could setup the Security mode, WiFi key and WPA Encryption mode.



Then click to next and submit the setting and. After few seconds, the setup is finished and users could surf internet.



Sometimes, users may want to have better signal and high data transmission, so it's necessary to use 4G LTE [External antenna for HUAWEI B593](#). But there is no setting in HUAWEI B593 4G LTE CPE. It could enhance the signal invisibly.